



**Together we can do it – ka taea e tatou – together we are able**

**WEEK 11 TERM 1, 11 April 2016**

Phone: 06 7529733 \*Fax: 06 7529112 \*email: [admin@mokau.school.nz](mailto:admin@mokau.school.nz) \* web: [www.mokau.school.nz](http://www.mokau.school.nz)



Mokau  
Butchery  
06 7529844



Mokau Inn  
Motel  
06 7529725



River Run  
Café  
067529859



06 7529710

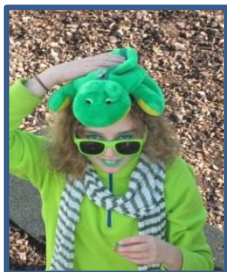


Whitebait Inn  
067529713



Junction Service  
Station  
06 7529885

## **Mokau were 'Seen for Team Green'!**



Our green team arrived one by one to squeals of delight from their peers. There were some wonderful outfits and accessories on display at the photo shoot.

All students enjoyed a

green prescription of fitness activities with Project Energiser Vicki Coll followed by yummy green pancakes for lunch. Maple syrup calories were then worked off when 260 green fingers tirelessly distributed many buckets of mulch around the plants in the wildside. What a great day thanks to all concerned and St John are \$65.00 richer. !



Thank you to those of you who have taken the opportunity to make an appointment to come in and talk to your child's teacher - if you have forgotten in the whirl wind of end of Term there are a few spaces left on Wednesday's timetable.

After more than twenty years' service at Mokau School Margaret Walshaw is embarking on a well-earned retirement. Staff, students, and parents wish you well Margaret.

Staff would also like to wish everyone a happy, safe holiday. After a hectic, but productive, Term we wish to advise that from the beginning of Term 2 Miss Karati is returning to the junior room five days a week and Mrs Scott and Merepaea will share the teaching of senior students.

Regards,  
Diane Scott

## **Awards**

This week's certificates were awarded to:

**Duffy Reading Award** - Dannielle for completing all her reading activities.

**Student of the week** - Francis for all her hard work in all curriculum areas.

**Brain of the week** - Ryan for being a very helpful class member.

## **Stationery Accounts**

A reminder that some stationery accounts are still outstanding. Please pay at the office as soon as possible.

## **Sports reports:**

Rico played Normanby Knights on Saturday. Waitara Bears won 7 tries to 6. Rico scored 2 tries. Way to go Rico!

**Roopu Points:** The competition is very close with just this week to go. Points at the end of week 10 were:

Kokako: 111	Kea: 97
Kakapo: 115	King Fisher: 94

## **Te reo Māori:**

Te Kupu o te Wiki for the week starting Rāhina, te 10 o Paenga-whāwhā, 2016 is hū: shoe, Wetekina ō hū.  
Take off your shoes.

## **School Camp:**

Camp for Year 5-8 students has been booked at Waitomo for Term 4 (26-28 October). If you are a parent of one of a Year 5-8 student and would like to attend camp with your child please let the office know. It is a legal requirement to police all parents attending camp. Further camp details will be sent home closer to the time.



- To Maxine Caskey for revamping the PE shed - it look great, thank you. Also for donating pine cones for our fires.
- To our helpers Mary-Elizabeth, Liz, Jo and Rob the green pancake chefs!

Mokau School  
Proudly Sponsored  
by:



Mokau  
Butchery  
06 7529844



Mokau Inn  
Motel  
06 7529725



River Run  
Café  
067529859



06 7529710



Whitebait Inn  
067529713



Junction Service  
Station  
06 7529885

### Dates of Dairies

#### **Term 1**

- 11<sup>th</sup> Duffy Role Model Assembly  
Parent -Teacher Interviews
- 13<sup>th</sup> Parent -Teacher Interviews
- 15<sup>th</sup> Last Day of Term 1

**Please note that there will be a shared lunch on Friday for the end of the term - all welcome.**

#### **May**

- 2<sup>nd</sup> First Day Term 2
- 5<sup>th</sup> Crazy Hair Day for Air Ambulance
- 6<sup>th</sup> Tabloid Sports
- 11<sup>th</sup> Anne Purves visiting
- 13<sup>th</sup> Marae Day
- 17<sup>th</sup> Home and School AGM
- 18<sup>th</sup> Board of Trustees Meeting
- 20<sup>th</sup> Duffy Theatre 1.30 pm

### Holiday Challenge

Attached to last week's newsletter was the student's new creativity challenge - we are hoping to see some wonderful insect hotels next term to put up around the school. I hope this will be a fun, family holiday project.

### PUBLIC NOTICES

#### Girls' Brigade

**AGM:** Due to unforeseen circumstances the Girls' Brigade AGM is being postponed. Another date will be set for this meeting in due course.



**Camp:** This is planned for the coming school holidays. Could mothers please let Dorothy know which week (dates) suit the girls' best, and the leaders will plan it when most can attend. It will be at the Lowry's farm on Manganui Rd, Awakino.

Happy holidays; Dorothy Lowry 7529123

### April School Holiday Art at the Govett-Brewster

Wed 20<sup>th</sup> and 27<sup>th</sup> Sculpture 'n' zizz  
Thur 21<sup>st</sup> and 28<sup>th</sup> Shadow Play  
Fri 22<sup>nd</sup> Taranaki's Tale  
Fri 29<sup>th</sup> Dream World  
Todd Energy Learning Centre, 10am-12 noon and 1pm-3pm. Free entry, donations welcome, all ages, kids bring an adult. No bookings necessary. Pick a session or join them all and drop in to make art that surprises and inspires.

### Young Visionaries Term 2 2016 after school art classes 4.00 - 5.30 pm

Ages 6 - 8 Wednesdays, 4 May - 6 July  
Ages 9 - 13 Thursdays 5 May - 7 July  
Todd Energy Learning Centre. \$55 per term. Booking essential. Students have fun in the mysterious world of cameraless photography. Tutor Diana Wynyard leads students on a journey of discovery using techniques old and new, to experiment with light and dark - all inspired by the world's biggest cameraless photography exhibition *Emanations*.

### King Country Junior Hockey Open Days

**Intermediate Open Day:** (years 7 & 8)  
Tues 12<sup>th</sup> April 3:30pm Te Kuiti High School  
a. Hockey Session 3:30pm - 5pm  
b. Rules Session in the Pavillion 3:45pm - 5pm

**Junior A & B Open Day:** (years 2 - 6)  
Wed 13<sup>th</sup> April 3:30pm Te Kuiti High School  
a. Hockey Session 3:30pm-5pm  
b. Rules Session in the Pavillion 3:45pm-5pm

These Open Days are to inform all Parents/Coaches and children involved in King Country Hockey.

You can also bring forms along to the open days tomorrow and Wednesday or have them to Wendy Smyth by the end of term so they can get a draw done for all grades over the holidays.

